

# **iexplora!** Annual Report 2019-2020



**iexplora!**

# 2019-2020 ANNUAL REPORT

July 1, 2019 through June 30, 2020



Mission and Values, p. 3

Letter from President and Executive Director, p. 4

Investing in our Youngest Learners, p. 5-6

Investing in STEAM Workforce Development, p. 7-9

Investing in Communities Statewide, p. 10-11

Investing in Visitor Experiences at Explora, p. 12-14

A New Campus in Old Town, p. 15

Explora Financial Health, p. 16

Statistics and Achievements, p. 17

Explora Donors, p. 18-23



## MISSION & VALUES

### Explora's Mission:

Creating opportunities for inspirational discovery and the joy of lifelong learning through interactive experiences in Science, Technology, Engineering, Art, and Math.



### Our Values:

**Learning:** We advocate for self-directed, hands-on experiential learning as a foundation for innovation, creativity, and critical thinking.

**Community:** We celebrate the diversity of the community in which we live and grow, and we create environments where all community members are welcomed and valued.

**Generosity:** We practice and cultivate generosity through listening, respect, and the sharing of time, ideas, and resources.

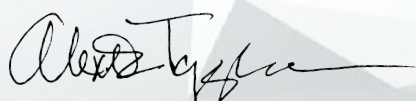
**Sustainability:** Organizational health enables us to act boldly for the long-term benefit of Explora, our community, and our partners.

## LETTER FROM PRESIDENT & EXECUTIVE DIRECTOR

Explora's core values have long guided our engagement with and service to New Mexico's children and families. They are the foundation of our Cradle through Career STEAM Learning Strategic Focus to engage, educate, and employ New Mexicans in science, technology, engineering, art, and math. As we reflect on the past fiscal year, we can see how critical those values were to meeting emerging needs, overcoming shared challenges, and remaining relevant to communities statewide.

- **Community:** Explora expanded our Statewide Outreach program by nearly 40% this year, bringing STEAM enrichment to more children living in underserved tribal, rural, and remote communities.
- **Generosity:** Through partnership with over 90 community organizations, Explora disseminated over 20,000 no-cost family memberships this year, and we were gratified to see the number of Community Partner member admissions surpass those of our paid members for the first time. This affirms Explora's long-standing commitment to eliminating financial barriers to STEAM learning and enrichment.
- **Learning:** Explora values the wisdom held among our local community members. This year it was critically important to continue our community listening, especially with local teens. Explora held six focus groups and a dozen interviews to inform planning of X Studio, our new STEAM education and workforce development center. Additionally, Explora established the Teen Advisory Group (TAG) to help guide X Studio planning, design, and programming. Each TAG meeting results in rich learning that will increase the impact and relevance of X Studio programs.
- **Sustainability:** From March 2020 through the end of the fiscal year, Explora was closed to the public due to the COVID-19 pandemic. During this time, we continued to serve as a trusted resource for STEAM education by utilizing virtual platforms like Zoom, expanding our use of social media, and distributing non-digital STEAM Learning Kits in collaboration with partners across the state. Cutting expenses and increasing contributed income helped Explora remain fiscally healthy, despite the difficult year.

While the past year was filled with change and challenge, the one constant was the generous support of people throughout our community. Thank you for your trust in Explora and your investment in New Mexico's future STEAM innovators and leaders!



Alexis Kerschner Tappan  
Explora Board President



Joe Hastings  
Executive Director



## CRADLE THROUGH CAREER: Investing in our Youngest Learners

Explora understands that we must start early if we are to instill a love for lifelong learning in our children. Plus, investing in early childhood education has been proven to have a very high return on investment, producing a more capable, productive, and valuable workforce that pays dividends to New Mexico for generations to come ([heckmanequation.org](http://heckmanequation.org)). That's why Explora offers Early Childhood (EC) Education in STEAM for learners 0-5 that not only primes them for elementary school, but also fosters their social and emotional growth. Our EC work includes direct programs at Explora and statewide, along with EC educator professional development workshops to increase capacity to provide critical early childhood engagement throughout New Mexico.

### Program/Service Highlights:

- Two signature Early Childhood programs at Explora, Growing a Scientist™ (for preschoolers) and Science to Grow On™ (for children in grades K-3) continued to engage our youngest learners alongside their adult caregivers. Explora served approximately 300 young children through these popular programs.
- Our Toddler Time program served an amazing 10,150 children and adults who visited Explora this year--an increase of over 20% from the previous year!
- Explora provided professional development for 913 Early Childhood educators statewide, building their capacities to teach STEAM to young children in their classrooms, libraries, and community centers.

## Explora as a Leader and Convener:

- Explora convened Early Childhood educators for the second annual **Building Science Learning in Early Childhood Summit**, which occurred in November 2019. Growing from 125 participants in 2018 to over 225 from all over the state in 2019, this summit included workshops presented by 21 Early Childhood educators. Feedback was overwhelmingly positive, with one educator citing “the intimacy of the workshops, small groups, and attentive presenters” as the most meaningful components of the event.
- Working collaboratively to support **STEAM learning opportunities for our youngest learners and their families**, Explora and New Mexico Association for the Education of Young Children (NMAEYC) partnered to offer a series of materials-rich workshops for Early Childhood educators. Due to COVID-19, some of these workshops transitioned to virtual sessions with materials distributed to attendees prior to each event.



- Explora convened a planning team, composed of a dozen local early childhood experts, to start work on **Brillante, the Early Learning Center at Explora**. Inspired by the world-famous Reggio Emilia approach, **Brillante** will be the state’s only full-time museum-based STEAM early learning center and will serve over 100 infants, toddlers, and young children with rich STEAM learning experiences. Brillante will be part of Explora’s Cradle through Career STEAM Learning Campus, currently under development.

**Brillante** also will develop our state’s next generation of Early Childhood professionals, serving as the lab school for local higher education institutions. Additionally, it will provide ongoing professional development for Early Childhood educators from across New Mexico and state-of-the-art facilities, like a materials-rich atelier, that can be used by other local centers.

# INVESTING IN STEAM WORKFORCE DEVELOPMENT

New Mexico is home to major STEM resources that position our state as a prime hub to implement and scale major STEAM activities. In fact, for the past several years, the growth in STEM jobs locally has outpaced the number of STEM graduates qualified to fill these positions. Through development of X Studio, Explora's new teen center, expected to open in late 2021, Explora is working to prepare, train, and support our teens to stay on STEAM career pathways, in order to seize high-paying jobs and to transform educational and economic outcomes in New Mexico.

## Service Highlights:

- Explora's **Youth Intern Program** engaged 32 dynamic students from diverse backgrounds, who, in turn, shared their love for science learning with more than 10,000 younger students, peers, and adults!
- Our long-standing partnership with VanDyke Software enabled Explora to offer **Programmable Pi summer camp** for the past six years. In 2020, we hosted both in-person and virtual camps to teach middle and high school students real programming skills using Raspberry Pi devices (credit card-sized computers) they could take home to continue exploring computer science and coding.







## BUILDING THE WORKFORCE OF TOMORROW, TODAY!

### Explora as a Leader and Convener:

Explora coordinated with two other sites to host **14 Teen Science Café** events, informal teen-friendly presentations and activities with local scientists, engineers, and other professionals. 373 teens enjoyed hands-on demonstrations, activities, and career connection opportunities, designed to spark interest in STEM career options.

We completed significant milestones in our campus expansion **plan to build X Studio**, a one-of-a-kind, 8,000-sq.ft. STEAM education and workforce development center. In partnership with Studio SW Architects and the City of Albuquerque, Explora completed architectural design development and began program planning for X Studio. Our planning was informed by over 25 community listening sessions, 12 empathy interviews with local teens, and six focus groups with STEM educators, STEM employers, and teens.

Architectural rendering of X Studio







Explora and AFRL-NM continued our collaboration to support teachers statewide. Together, we served 1,022 teachers through 53 **professional development (PD) workshops**. In addition, 127 students and teachers experienced career talks with local STEM professionals through our Classroom Connections program.

Explora received national recognition for our leadership in Making, with selection as a Regional Hub for the Making Spaces program in December of 2019. As a **Maker Ed Making Spaces Hub**, Explora supported six maker spaces throughout the state while providing maker education, professional development, and making equipment.

We continued our popular **Teen Night** event series on November 1, 2019, drawing 230 teens, and again on February 28, 2020, welcoming 550 teens! Thanks to our partners, Facebook and the City of Albuquerque, youth at these free, fun events were able to explore our exhibits, play games, and learn more about STEM careers.

## INVESTING IN COMMUNITIES STATEWIDE

Children living in tribal, rural, and remote communities across New Mexico are in deep need of equitable access to educational enrichment. Explora is committed to closing the opportunity gap for New Mexico's children and families. That's why we travel extensively all across the state, bringing STEAM programs to schools, libraries, community centers, Chapter houses, and more, so kids can engage in STEAM learning closer to home. This year, "outreach" took on new meaning due to COVID-related travel restrictions, and Explora built our capacity to provide virtual, online programs, reaching homes in New Mexico and beyond! Additionally, outreach meant the production and distribution of thousands of kits full of science materials, so that rural families without broadband access can utilize Explora's "Try This at Home" science activities. This year's nontraditional outreach even included printing science curriculum in regional newspapers, like the *Gallup Independent* and *Navajo Times*.

## THERE ARE OVER 570,000 REASONS TO SUPPORT EXPLORA

They ask lots of questions. They love to explore and experiment. They have varied backgrounds, interests, and abilities, but they ALL crave knowledge and safe places to play and learn. They are our future. New Mexico's 570,000 young people deserve the best and most innovative education possible, and Explora strives to provide this education around the state.





# NARROWING THE OPPORTUNITY GAP FOR NM'S YOUTH

---

## Service Highlights:

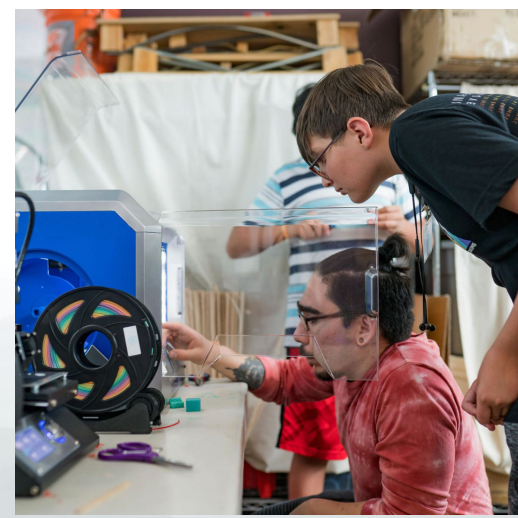
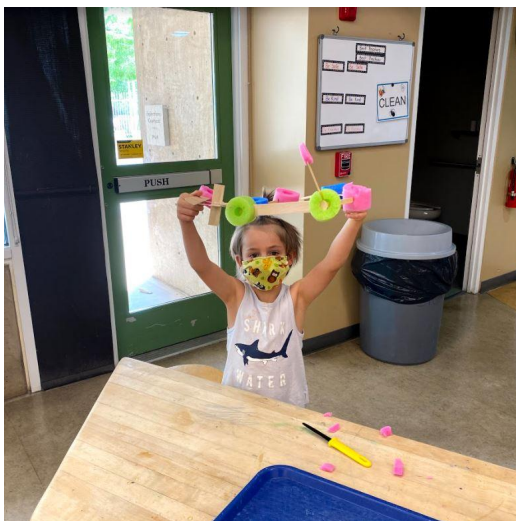
- Explora engaged 51,843 children and adults in **Statewide Outreach**, nearly the same total as last fiscal year, despite major disruptions and closures related to the COVID-19 pandemic.
- Thanks to our amazing donors, Explora was able to offer **scholarships** for 44 low-income students to attend our STEAM camps.
- We distributed no-cost Explora memberships to a total of 25,064 families in financial need through our **Community Partner Membership Program**.

## Collaborative Efforts:

- In continued partnership with Navajo Transitional Energy Company (NTEC) and a new partnership with the NM Indian Affairs Department (IAD), Explora educators were able to bring STEAM **programs to schools on or near the Navajo Nation** multiple times. With the onset of the COVID-19 pandemic, Explora continued to engage students in STEAM learning with non-digital kits made possible by these generous partners.
- Through continued collaboration with the Village of Los Ranchos and Lavender in the Village, campers have been able to discover STEM in agriculture as part of Explora's **Farm Camps**. Hosting these camps in the middle of fields actively being farmed provided opportunities for campers to meet beekeepers, to see flood irrigation via acequias, and to learn directly from local farmers.
- In collaboration with schools like El Camino Real Academy, hundreds of students received **"Try this at Home" engineering kits**, which they did with teacher support during remote learning this spring.
- Similarly, in collaboration with NM Autism Society and Autism Speaks, Explora created a **sensory-friendly Engineering Bridges kit**. Over 50 kits were distributed to families across New Mexico who have a child affected by autism.
- Rio Grande Down Syndrome Network and Explora collaborated to ensure students affected by Down Syndrome were able to participate in Explora camps.

## INVESTING IN VISITOR EXPERIENCES AT EXPLORA

Kids are out of school much more than they're in school. In fact, at high school graduation, a student will have spent only 9% of his or her waking hours in school (Sosniak, 2001). Experiences outside of school—at places like Explora—are essential components of our youth's education and development. Every child deserves access to spaces where he or she can learn and grow, question and experiment, succeed and fail, and journey along pathways to STEAM careers. Places like Explora give families safe spaces to spend time together, explore, and learn. With Explora's exhibits, visitors can manipulate a wide range of physical variables and develop their own thinking about what they are experiencing. We provide materials-rich experiences that blur the lines between science, technology, and art, opening up a colorful, welcoming, and thought-provoking world of possibilities.



## Service Highlights:

- On the exhibit floor this year Explora hosted **Mechanics Alive!**, a traveling exhibition from the United Kingdom. From September 2019 to May 2020, a collection of 18 whimsical handmade artworks, called automata, showcased the essence of STEAM, with each piece humorously displaying aspects of science, technology, engineering, art, and math.

The automata were accompanied by hands-on interactive boards related to the mechanics of simple machine; these boards were placed strategically throughout the museum, complementing Explora's existing exhibits.



## Collaborative Efforts:

- In collaboration with 33 local organizations, musicians, and food & coffee vendors, Explora's Adult Night event series provided lifelong-learning opportunities and engaging fun for 2,929 adults. Explora launched virtual and at-home, hands-on scientific engagement for **Adult Night** visitors after the onset of the pandemic.
- In July 2019, Explora kicked off **STEM in the Burque**, a two-year exhibition project funded by the Institute of Museum and Library Services (IMLS) and Albuquerque Bernalillo County Water Utility Authority (ABCWUA). A co-creation project with local teens and local STEAM employers, including ABCWUA, AFRL-NM, and Positive Energy Solar, **STEM in the Burque** will be the first exhibition in Explora's new X Studio teen, aiming to increase awareness of and access to STEAM career fields, particularly for low-income teens of color and their families. Teens, community partners, and Explora staff engaged in various exhibition development exercises this year, such as design charrettes and rapid prototyping sessions.



## Explora as a Leader and Convener:

- Explora continued to engage visitors of all ages in the practice of Making from our innovative STEAM Room Makerspace, **Studio Inventivo**. Studio Inventivo became the home of our popular Maker Mondays series as well as our Maker in Residence program. Our first Maker in Residence artist hosted a total of 14 workshops for families on the science of musical instruments, serving 427 children and 397 adults.
- Today, Explora is an award-winning, nationally-recognized hub for Maker-oriented programming. As part of this service, we also lead a **Maker Educator Community of Practice**, which served 170 Albuquerque teachers and supports their capacity to use Making activities in their home classrooms.





## A NEW CAMPUS IN OLD TOWN: X STUDIO GROUNDBREAKING

For the past 15 years, Explora has thrived in Old Town, Albuquerque, adjacent to exemplary museums, art centers, and parks, and the Old Town, Sawmill, and Wells Park neighborhoods, all of which have a long, proud history. Explora is honored to be part of this community. After years of planning, Explora is expanding on our current site and on an additional 4.5-acre parcel across 18th Street. Phase One of our Cradle through Career STEAM Learning Campus capital project is X Studio, our STEAM workforce development center for teens.



As the fiscal year closed, we prepared for a summer groundbreaking of X Studio: teens' one stop shop to explore, hang out, and discover pathways to cool jobs that solve big problems and pay well. The best jobs might seem hard to get, but at X Studio, the right tools, technologies, experiences, and mentors will help open doors to a future only our teens can imagine. This expansion will allow Explora to greatly increase the number of community members we serve and double our program space. The **Next Great Minds Campaign** supports our immediate needs for expansion, as well as planned growth over the next ten years.

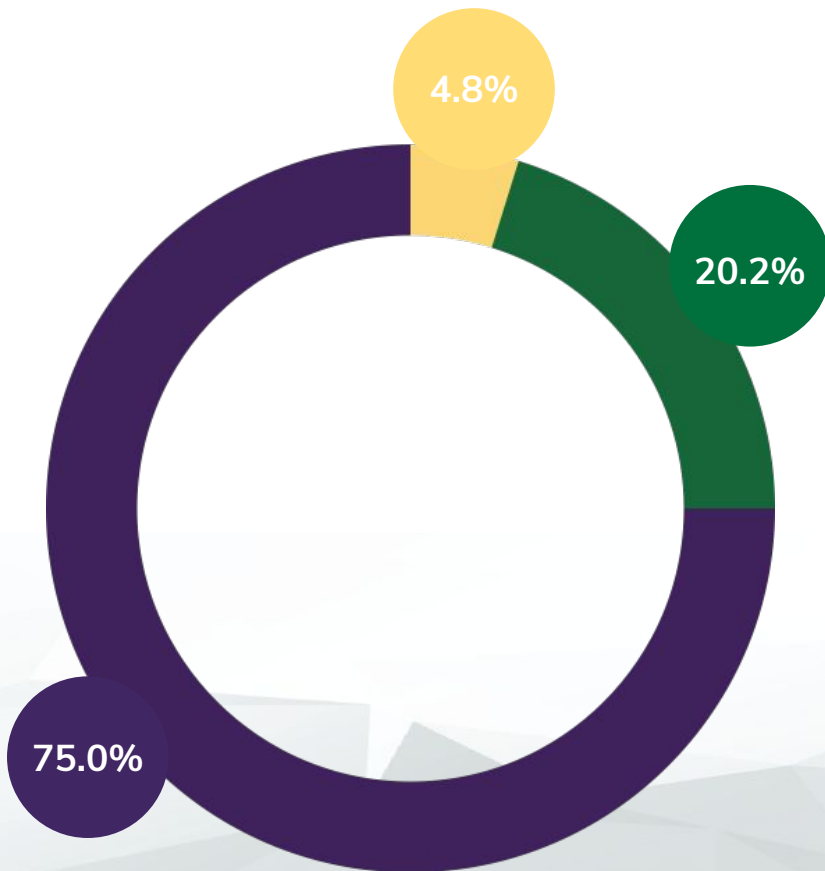
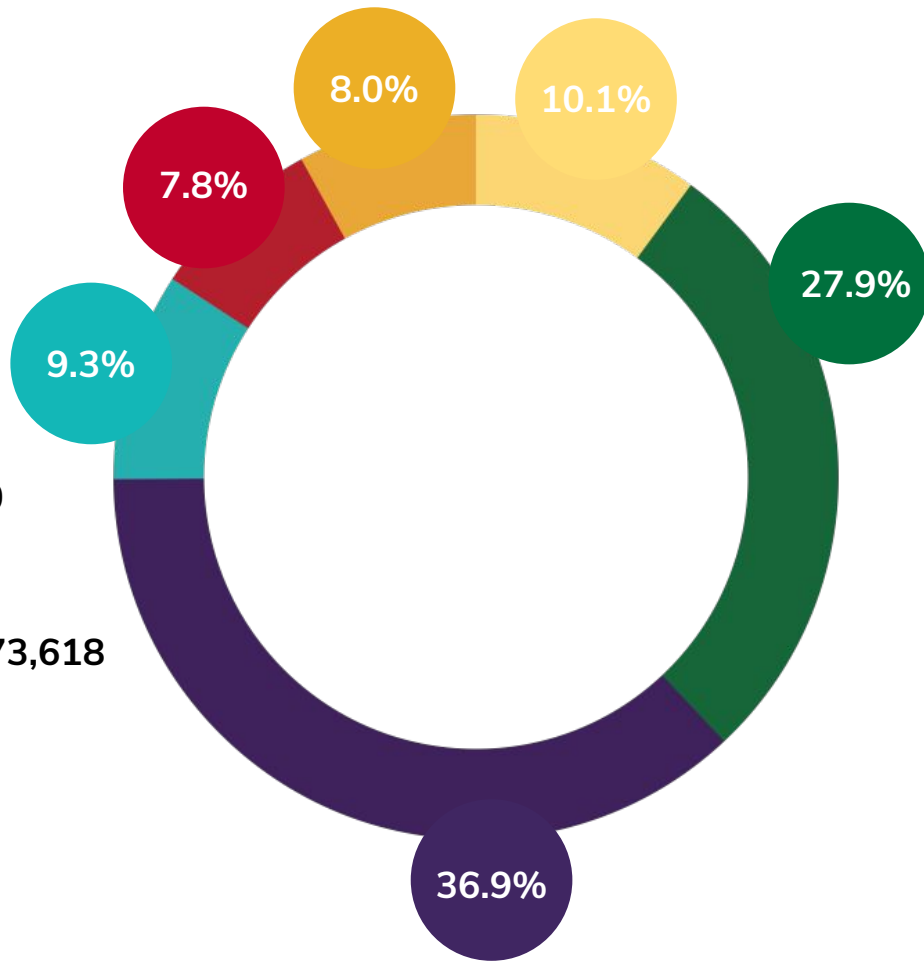
# EXPLORA FINANCIAL HEALTH

7/1/2019-6/30/2020

Audited numbers for Expenses and Revenue

- In-Kind: \$576,917
- Earned Income: \$1,584,217
- Government: \$2,091,125
- Foundation Grants: \$529,006
- Corporate Gifts & Grants: \$440,660
- Individual Contributions: \$451,693

**TOTAL AUDITED REVENUE: \$5,673,618**



- Fundraising: \$251,693
- General & Administrative: \$1,049,601
- Programs: \$3,888,320

**TOTAL AUDITED EXPENSES:  
\$5,189,614**



# STATISTICS AND ACHIEVEMENTS

7/1/2019-6/30/2020

**239,988**

people experienced  
Explora

**2,929**

attendees at Adult Night  
events

**4,250**

guests celebrated 250  
birthday parties

**271**

volunteers contributed  
approximately 12,000  
hours of service

**51,843**

individuals served  
through statewide  
outreach

**3,459**

educators received  
professional  
development

**6,627**

students visited Explora  
on field trips

**27,576**

families with Explora  
memberships

**13,757**

attendees at Family  
Science Nights (6,508  
adults & 7,249 children)

**25,064**

no-cost family  
memberships issued  
through 104 Community  
Partner member  
organizations

**353**

students, grades K-8,  
engaged through our  
Home School program

**1,532**

pre-K through high  
school students  
attended 186 Explora  
camps



**iexplora!**

## **MISSION PARTNERS AND MAJOR DONORS**

### **Premier Partners: City of Albuquerque**

Mayor  
Tim Keller

### **City Councilors**

Brook Bassan  
Isaac Benton  
Cynthia Borrego  
Pat Davis  
Diane G. Gibson  
Don Harris  
Trudy Jones  
Klarissa J. Peña  
Ken Sanchez  
Lan Sena

### **State of New Mexico**

Governor Michelle Lujan Grisham  
Lieutenant Governor Howie Morales  
New Mexico Senate  
New Mexico House of Representatives

### **Cornerstone Partners:**

Air Force Research Laboratory New Mexico  
Albuquerque Bernalillo Water Utility Authority  
Institute of Museum & Library Services  
National Science Foundation



### **Leadership Partners:**

Facebook  
Institute of Museum & Library Services  
New Mexico EPSCoR  
New Mexico Funders Collaborative  
New Mexico Indian Affairs Department  
Sandia National Laboratories

### **Contributing Partners:**

Albuquerque International Sunport  
AstraZeneca Pharmaceuticals, LP  
Bank of Albuquerque  
Bradbury Stamm Construction Giving Program  
Cognizant Technology Solutions  
Intel Corporation  
Navajo Transitional Energy Company, LLC  
New Mexico Gas Company  
New Mexico Association for the Education of Young Children  
Southwest Capital Bank  
United Way of Central New Mexico  
US Eagle  
Vintage Albuquerque

### **Supporting Partners:**

Adelante Enterprises  
Akima  
Association of Science and Technology Centers  
Autism Speaks, Inc.  
Community Foundation of Southern New Mexico  
Dekker/Perich/Sabatini  
Exploratorium  
Fidelity Investments  
Fleischaker Women's Legacy Fund  
Klinger Constructors, Inc.  
Lavender in the Village of Los Ranchos, Inc.  
Navajo United Way  
New Mexico Oil & Gas Association  
Positive Energy Solar  
Professional Aerospace Contractors Association of New Mexico  
Thornburg Investment Management  
Ultramain Systems, Inc.  
Urban Enhancement Trust Fund of the City of Albuquerque  
VanDyke Software  
Wells Fargo





**Corporate Donors:**

Blue Cross and Blue Shield of New Mexico  
Business Environments  
Busy Bee Frozen Custard  
Colliers International  
Color Wheel Toys  
Dion's  
Effie Spitzer Memorial Fund  
Galactic Unite  
Goodman Realty Group  
Hinkle Family Fun Center  
Ida Kelly Rewarding Excellence Fund  
Kendra Scott, LLC  
Kona Ice of Albuquerque, LLC  
New Mexico Tourism Department  
Peacock Law  
Rebel Donut  
RS21  
Smith's Food & Drug Centers, Inc.  
Studio Southwest Architects  
Tides Center  
United Way of Northern New Mexico  
Urban Land Institute  
Walmart  
Wings of Enchantment Butterfly Farm

**Foundation Donors:**

Albert I. Pierce Foundation  
Albuquerque Community Foundation  
Jane and Doug Swift Fund for Art & Education  
AmazonSmile Foundation  
BBVA Compass Foundation  
FHL Foundation  
Flax Family Foundation  
Intel Foundation  
Los Alamos National Laboratory Foundation  
M.R. Metzger Family Foundation  
McCune Charitable Foundation  
PNM Resources Foundation  
Rio Rancho Community Foundation  
Rotary Club of Albuquerque  
Sandia Foundation  
Stocker Foundation  
Taos Community Foundation  
The Cherry Picker Foundation  
The Rocking JT Foundation



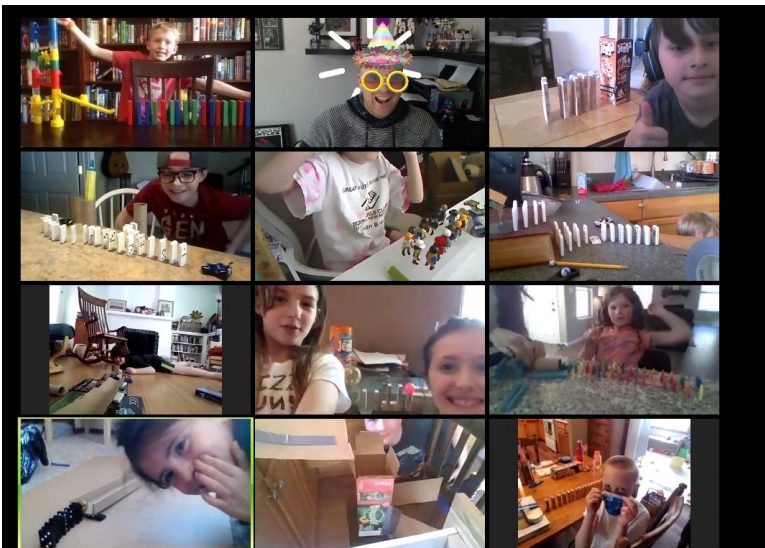
# EXPLORA DONOR SOCIETIES

## Da Vinci Society

2 Anonymous  
Don & Dianne Chalmers  
Kay Collins  
Leonard & Patricia Duda  
Pauline & Matt Gubbels  
Mike & Donna Mullane  
Debra Peacock & Nathan Korn  
Elizabeth R. Quinn  
J. Stephen & Lee Ann Rottler

## Galileo Society

Anonymous  
Louis & Stacy Abruzzo  
Adelmo "Del" & Rebecca Archuleta  
Don & Dianne Chalmers  
Kay Collins  
Jim & Geri Cramer  
Gertrude Dazzo  
Leonard & Patricia Duda  
Jane & Michael Flax  
Dee & Ruth Friesen  
Matt & Pauline Gubbels  
H.B. & Lucille Horn  
Drs. David & Kathy Hsi  
Cyrene Inman  
Dennis & Mary Ann Jontz  
William & Jan Keleher  
Debra Peacock & Nathan Korn  
Richard & Ann Leonard  
Robert A. Levin  
Robert Milne & Ann DeHart  
Mike & Donna Mullane  
Bob & Betsy Murphy  
Terry & Debra Pierce  
Elizabeth R. Quinn  
Jack & Donna Rust  
Betty Sabo  
Paul Tatter  
Larry D. Willard



## Eames Society

Rex & Barbara Allender  
Dr. Dale Alverson & Jennifer Bean Alverson  
5 Anonymous Donors  
Marci Blaze & Steve Levine  
Brian & Jada Bower  
Jeff Brown & Keri Piehl  
The Joseph N. Di Marco Family  
Nick & Sharee Estes  
Rachel Flax Kaplan & Daniel Kaplan  
Peggy & Russ Foos  
Benjamin H. Gardner & Tina N. Patel  
The Family of Jane Geist  
Dorothy Giacinto  
Jim, Darbi, Sawyer, & Tanner Gill  
Cheri & Dr. Richard Goldman  
Kathy & David Haaland  
Joe & Jasmin Hastings  
Tim & Nadine Hendry

Dennis & Mary Ann Jontz  
The Kaplan Family  
Katrina & Todd Kerns  
Alexis Kerschner Tappan & Alexander S.  
Tappan  
The Kirschner Family  
Richard E. Leonard  
Robert Milne & Ann DeHart  
Marvin Moss  
Novak MPGJ Family Fund  
Bert & Marta Parnall  
Joan Punt  
Keith Reese  
Reg & Bev Rider  
J. Stephen & Lee Ann Rottler  
Susan & Neal Shadoff  
Dianna & John Shomaker  
Tom Taylor  
Janet M. Thompson  
Frank T. Walker  
Catherine W. Woodward, in honor of  
Woody Woodward





## Individual Donors

18 Anonymous; Mary Abt; Patrick Adams; Dr. Dale Alverson & Jennifer Bean Alverson; Andrea Ambrosini & Justin Durfee; Tammy Arkie; Leslie & Edward Adler; Helen & Thomas Baca; Brooke Baker; Mary & Len Beavis; Sandra Begay; Kristin Behne; Rodger & Connie Beimer; Beth & Mark Berger; Jessica A. Bierner; Anne & Grant Black; Arthur Blanchard; Nancy & Cliff Blaugrund; Marci Blaze & Steve Levine; Kate BolognA; Alicia Borrego; Rebecca Brahm; Allison Brody; Jennifer Brower; Lauren Butcher; Jonathan Callender & Leila Hanson; David & Shelly Campbell; Jessi & Sean Campbell; Louise Campbell & Steven G. Tolber; Toni & Jeffrey Campbell; Ray & Cindy Campos; Charlotte Carl-Mitchell; Lath Carlson; Donna Carmichael; Amy Carr; Felicia Carrillo; Kathleen & Carroll Douglas Carter; Cheryl Chambellan; Sarah Tenorio Chavez; Edith Cherry & James See; Hilma & Jim Chynoweth; Blythe & Andrew Clark; Amanda & Brian Colburn; Mary Cooksey; Beth Corbin Hsi; Geri Cramer; Theresa & Alvaro Cruz-Cabrera; Tracy Cummins; Tom & Linda Curtis; Mary Jo Daniel & Marco Wikstrom; P.J. Depalma; Sharon & Larry Dreyfus; Sandra & Ken Duckert; Leonard & Patricia Duda; Melissa Dyea; Elizabeth & Mitch Earls; William Elias; Kevin & Leah Enright; Nick & Sharee Estes; Frances & David Ewing; Linda Ferro; Jane & Michael Flax; Rachel Flax Kaplan & Daniel Kaplan; Eve R. & Sheldon Flink; Michelle Franks; Dee & Ruth Friesen; Jennifer & Daniel Galasso; Sean & Mary Gallivan; Art Gardenswartz & Sonya Priestly; Benjamin Gardner & Tina Patel; Julian Garza; John Geddie; Donavon Gerty; Jim & Darbi Gill; Laurel Gladden; Cheri & Richard Goldman; Angelo Gonzales; Amy Greene; Dana & John Grisham; Tamara Grybko; Pauline & Matt Gubbels; Pauline Guillermo & Kristin Jensen; Billy & Rachel Gupton; Kimberly Gutierrez; Margaret Gutjahr; Kathy & David Haaland; Elisa Hall & Douglas Graham; Michael & Chelsey Hargather; Anita & Jerry Harper; Andrea & Drew Harrell; Harris L. Hartz; Joe & Jasmin Hastings; Michael & Kathy Hazen; Meg Healy & Drew Levin; Patricia & David Heiman; Tara & Brian Henderson; Joseph Hinojosa; Horne Giving Fund; Drs. David & Kathy Hsi; Sue & James Hutchison; Cyrene Inman; Lisa & Mark Isenberger; Kendra & Peter Johnson; Dennis & Mary Ann Jontz; Matt & Haley Kadish; Teala Kail & Michael Farrington; Norton Kalishman & Summers Goff Kalishman; Carrie & Ryan Reineke; Ryan & Miranda Kennedy; Evelyn & Amos Kent; Helen Kerschner & Karen Abrams; Alexis Kerschner Tappan & Alex Tappan; Sabrina Kien; Daniel Kingston; Richard Kirschner & Mary Oertel-Kirschner; Nyra Klauer & Jayme Chester; Malva Knoll; Tara Laforce; John Laing & Lisa Laing-Chavez; Kathleen & Stephen Larese; Gayle Larson; Sarah Lehnen & Joshua Newman; Kristin, David, & Grant Leigh; Ann & Richard Leonard; Cody Lewis; Karen Linford; Joe LiRosi; Elizabeth & Paul Livingston; Lucia Long; Maria Teresa Lopez Flores & Alberto Aguayo Rico; Nathan & Angelina Lopez-Brody; Jason Lott; Amy Love; Annette Lujan; Matt Makofske & Michael Hamilton; Trish & Leonard Marquez; Robin Marshment Henry; Susan Matteucci & Michael Loftin; Patricia O'Connor; Eugene McGuire & Rosemary Hunter; John McKean; Roger & Jane Yee; Meg & John Meister; Martha & David Meister; Laurel Meister Schmuck & Daniel Schmuck; Dayna Melvin; Theron Merrick & Brenda Hirschfeld; Amy & Nathaniel Miller; Robert Milne & Ann DeHart; Ralph & Cheryl Mirabal; Ruth & Paul Mix; Richard Montoya; Autumn Jo Montoya; Douglas & Jacqueline Moody; Hillary Moore; Davis Moran; Joseph Moreles & Sheena Ferguson; Shirley E. Morrison; Stacey & Gabriel Mounce; Melina Moyer; Judy & Michael Muldower; Mike & Donna Mullane; Bob & Betsy Murphy; Tim & Pam Nichols; Agatha Norwood & Michael Giurlando; Tom & Deb Novak; Gerald Oakland; Leslie & Lawrence O'Hanlon; Todd Olmos; David & Daphne Orner; Violet & Raymond Ortega; Mario Ortiz; Mike Ortiz; Sammi & Arielle Owens; Brenda Padilla; Joshua & Katie Paquette; Randall Parish & Selena Connealy; Janice & Stuart Paster; Kruti & Dhaval Patel; Deborah Peacock & Nathan Korn; Gus Pedrotty; Adrián Pedroza; David Pesiri & Brooke Rosen; Stefan Petties; Cynthia Phillips & Thomas Martin; Gary Pierson; Trisha & Marcus Pillars; Michael Plymel; Mary & Theodore Pockman; Lucas Poloni Cordeiro; Sarah Pratt; Robert & Evelyn Pulsipher; Joan Punt; Brian, Angela, & Phillip Rasmussen; Dennis Rasmussen; Larry & Jina Rasmussen; Jennifer Rautman; Mary Beth & Phillip Reeves; Diane Reuler; Erika Rimson & David Bernstein; Mieka Ritsema & Ashok Reddy; Katrina Roanhorse; Gwenn Robinson & Dwight Burney; David E. Rocha; Estela & Michael Rogholt; Arthur Rosenberg & Stella de Sa' Rego; Philip Rothfeld; J. Stephen & Lee Ann Rottler; Joan & Michael Rueckhaus; AJ Ruffin; Renee Ruybal & Monet Silva; Seema Sabu & Jason Dubois; Anthony Salvagno & Saliha Qasemi; Anna Sanchez; Yvette Sandoval; Raymond Saunders; Tim & Joan Scalzone; Ruth Schifani; Jesse Murray; Drora Schub; Shirley Schultz; Miriah Schwerkoske & Samuel Wells; David & Debbie Seely; Sheila & Bob Seigel; Steven Seigel; Susan & Neal Shadoff; Mona & Ken Sherrell; Margaret & Steve Showalter; Samantha & Patrick Siebert; Sasha Siemel; Cindy & Daniel Sinars; Jerry Smith; Victoria & Joshua Smith; Marsha Souers; Barry Spletzer; Nicole Strawn; Daniel Stromberg & Kristen Perez; Mary Lou Sullenberger; Mary Ann Sweeney & Edward Ricco; Bill & Rebecca Tallman; April & Lance Taylor; William Thiebaut; Federico Torres; Lynn & Craig Trojahn; Wayne & Maryann Trott; Randy Truelove Chalakee; Alexandria Rose Urban; Natalie Villwock-Witte & Kevin Witte; Jillian Walker; Jasmine A. Wasson; Michelle Watkins; Erica Webb; Christina & Dan Westbrook; Lauren Williams & James Gillies; Joanne Wilson; Gretchen Winchester; Sharon & Peter Woodbridge; Randy & Jacqueline Woodcock; Rachel Zollinger